



SIS LPEBL-KT

La Petite Ecole Bilingue – Kentish Town



The end of Meet is coming...

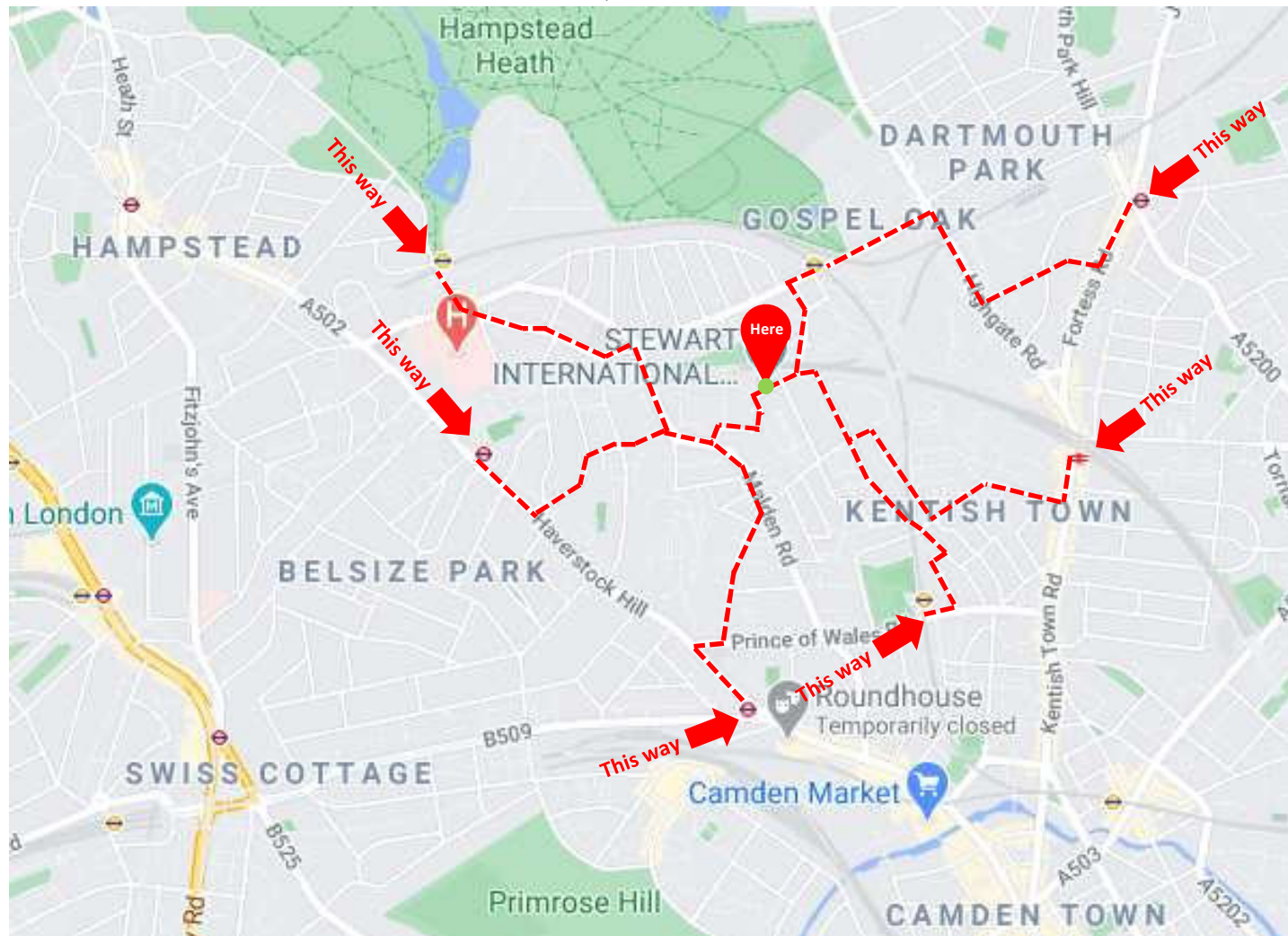


Location

SIS LPEBL-Kentish Town NW5 4NL

Do you remember where the school is ?

GPS coordinates: 51.55232496275378, -0.1529507438854524



Briefly,



- Monday 8th March 2021: Back to School for ALL pupils.
- Timings will be the same as before the lock down (please refer to the dedicated slide).
- Staff will all wear a face mask and get a PCR test twice a week.
- Ballet and ICT lessons will resume on site week starting 08/03/2021.
- After School care and Wednesday clubs will resume week starting 08/03/2021 with the same restrictive arrangements as before the lock down (please refer to the dedicated slides).
- All pupils having travelled abroad are required to have completed their quarantine period when relevant before coming back to school (teachers will continue to upload weekly/daily learning plan only on Gclassroom until the 12/03/2021, to the attention of those pupils; Meet lessons will cease for all on Friday 05/03/2021).

Key safe arrangements

Social distance in reality...



Staggered coming
into school per
year group

Staggered
playtime
departures,
no contact
between
“bubbles”

Staggered
lunchtime with 3
services in total

Compulsory
handwashing:
start of the day,
after each
playtime, before &
after eating/toilet

All primary pupils
to bring in their
own drinking
bottle (no access
to drinking
fountains)

Staggered leaving
time per year
group

Key safe arrangements

Social distance in reality...



Classroom seating plan, face forward teaching as per guidance

Minimal sharing of resources (strong disinfection plan); pupils to use their own stationary set; no access to library

Social distance display in all common areas

Dining hall seating plan; Pupils served at their table

Toilets use rota for each floor

Communication between school/teachers/parents via Gclassroom or office's email

What? When?

Timings



**Coming into
school time**

**Morning
playtime**

Lunch time

**Midday
playtime**

**Afternoon
playtime**

**Leaving
school time**

Nurs/PS	Rec/MS	Y1/GS	Y2/CP	Y3-4/ CE1-2	Y5/CM1	Y6/CM2
8.25	8.30	8.35	8.25	8.35	8.30	8.25
9.45 (end 10.15)	9.45 (end 10.15)	9.45 (end 10.15)	9.45 (end 10.15)	10.05 (end 10.35)	10.05 (end 10.35)	10.05 (end 10.35)
11.15 (end 11.50)	11.15 (end 11.50)	11.50 (end 12.30)	11.55 (end 12.30)	12.30 (end 1.10)	12.35 (end 1.10)	12.35 (end 1.10)
Nap: 12.00 - 1.00	12.30 (end 1.15)	12.30 (end 1.15)	12.30 (end 1.15)	1.10 (end 2.05)	1.10 (end 2.05)	1.10 (end 2.05)
2.30 (end 3.00)	2.30 (end 3.00)	2.30 (end 3.00)	2.30 (end 3.00)	20min break in class	20min break in class	20min break in class
3.55	4.00	3.55	4.00	4.05	4.05	4.05

Pupils are expected at school at the exact times detailed below, no sooner, no later. Siblings are all expected at the youngest one entry time.

After School Care

Between 4&6.30pm, will resume from Monday
08/03/2021

2 separate “bubbles” of 15 pupils max each

Enrolment compulsory within the capacity limit

Parents to provide a snack for their child

Parents to come for pick up at either 4.30pm,
5.00pm, 5.30pm, 6.00pm or 6.30pm & remain outside.

▶ [AFTER SCHOOL CARE ENROLMENT FORM](#)



After School Care

Wednesday clubs

**Will resume week starting
08/03/2021**

**Upon enrolment only and within the
capacity limit**

**COLD lunch pack
clearly labelled to
be brought in the
morning**

**3 compulsory activities
School pick up at 4.00pm
(except for children staying for After
school Care)**

**2 to 3 groups according to pupils'
age ranges and avoiding mixing
class bubbles as much as possible**

Parents will be sent a more detailed email shortly, once the relevant guidance is finally set and all our Wednesday teachers have come back to us.



Wednesday clubs

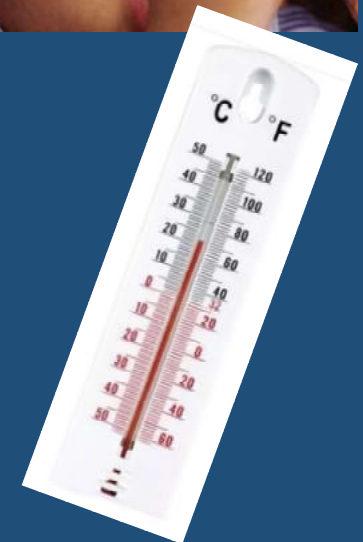
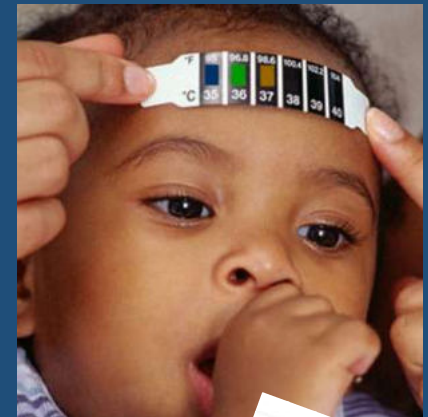
Pictures of the school



Entrance

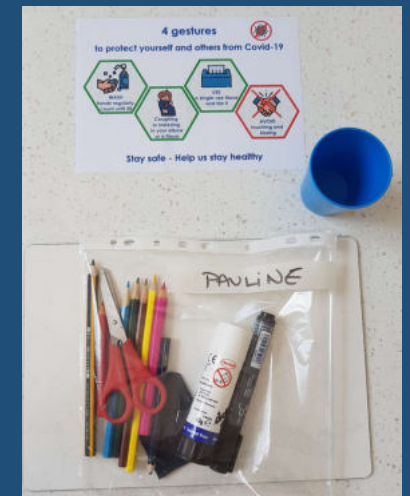


We are ready to welcome you, Marie has received her 008 licence, she is licenced to trigger the thermometer gun!





PS/ Nursery Classroom





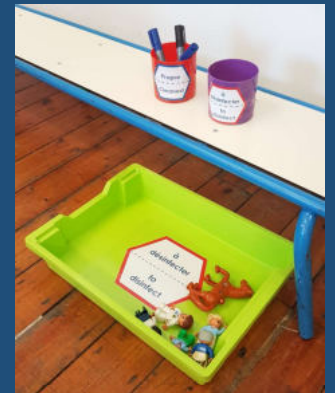
Salle de sieste / Nap room



MS/ Reception Classroom



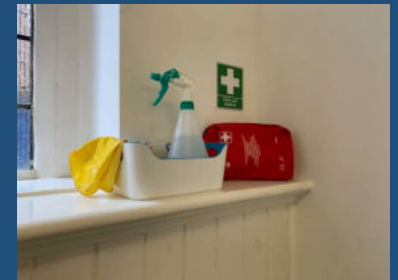
GS/ Year 1 Classroom



CP / Year 2 Classroom



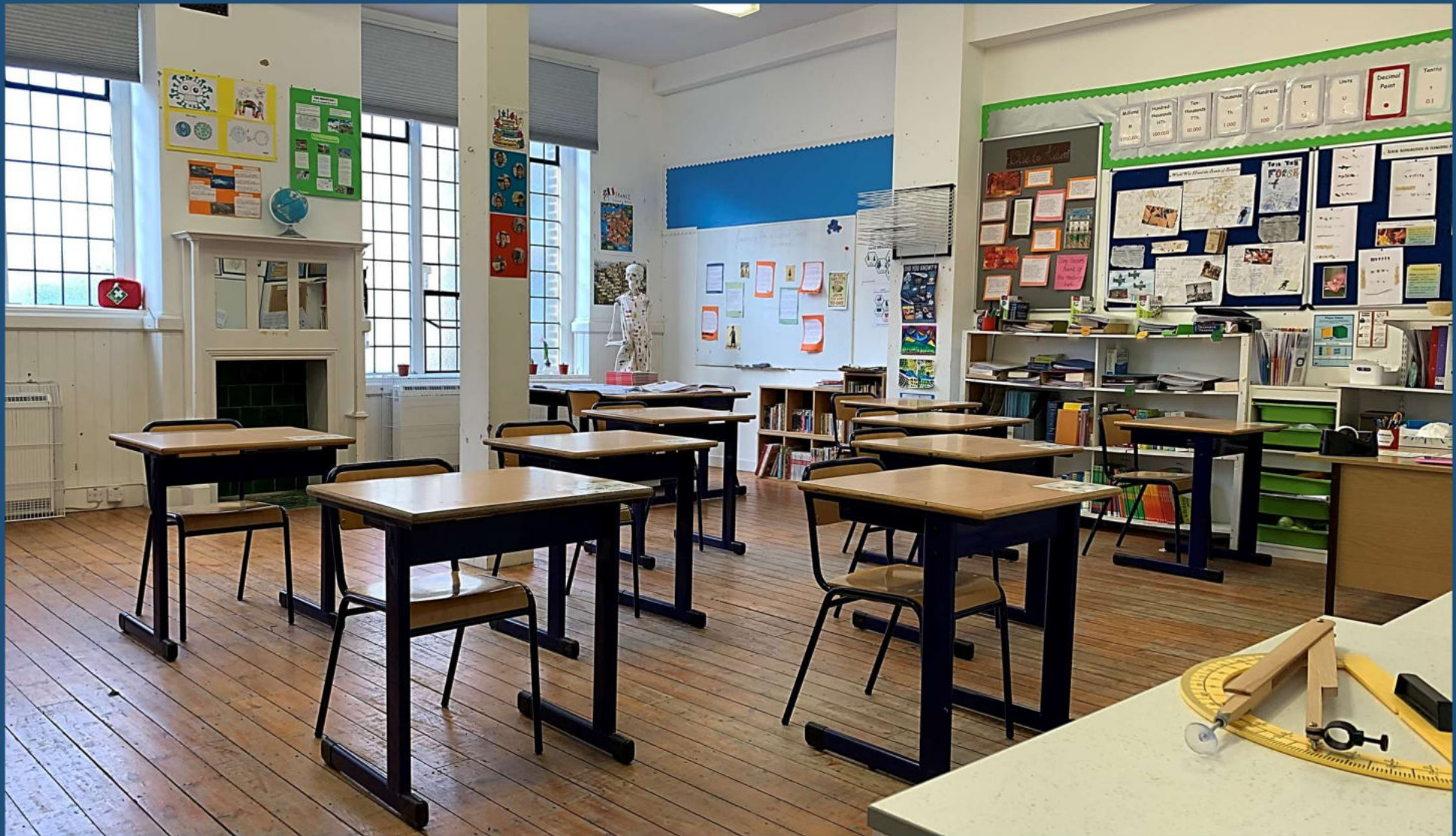
CE1-CE2 / Year 3-4 Classroom



CM1 / Year 5 Classroom



CM2 / Year 6 Classroom



Come back to us quickly children, Dima has prepared lots of delicious food for you...

Dining hall



Children favourite menu to start



Week 1 menu:

Monday

Veal liver with sprouts
Durian fruit

Tuesday

Chicken with mustard sauce
with salsify
Kiwi éclair

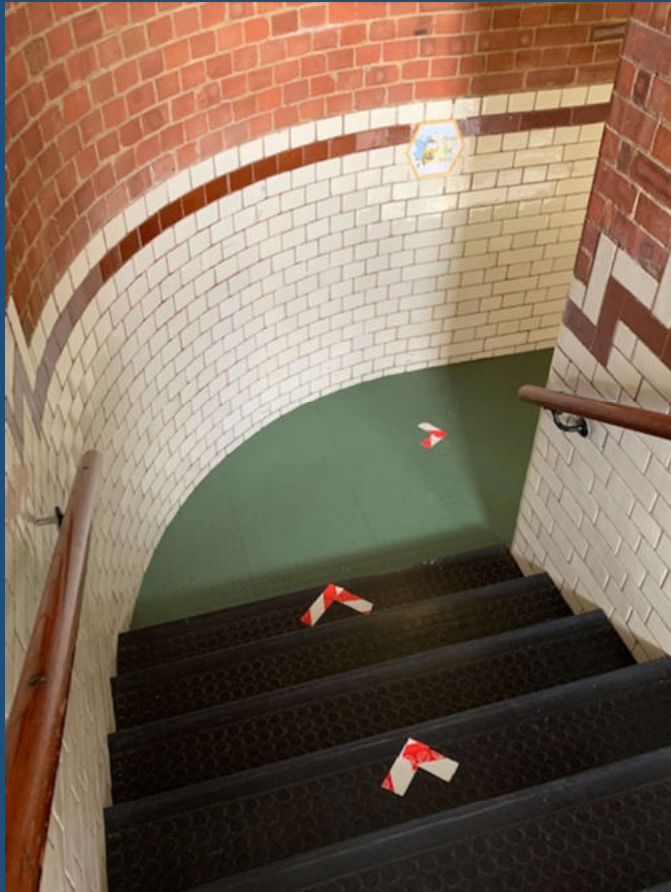
Thursday

Spinach quiche
Pumpkin rice pudding

Friday

Mussels with Maroilles sauce
Avocado puree

Stairs...



... and corridor.



Toilets



See you all very soon.
And till then be safe.



SIS LPEBL-KT, La Petite Ecole Bilingue Kentish-Town

22 Vicars road LONDON NW5 4NL

office@lpebl-kt.com

0 207 284 2620